



Healthcare Solutions Respiratory Illness Season

Diagnostics, Specimen Collection Kits, and PPE

Insight. Impact. Outcomes.

 **fisher**
healthcare
part of Thermo Fisher Scientific

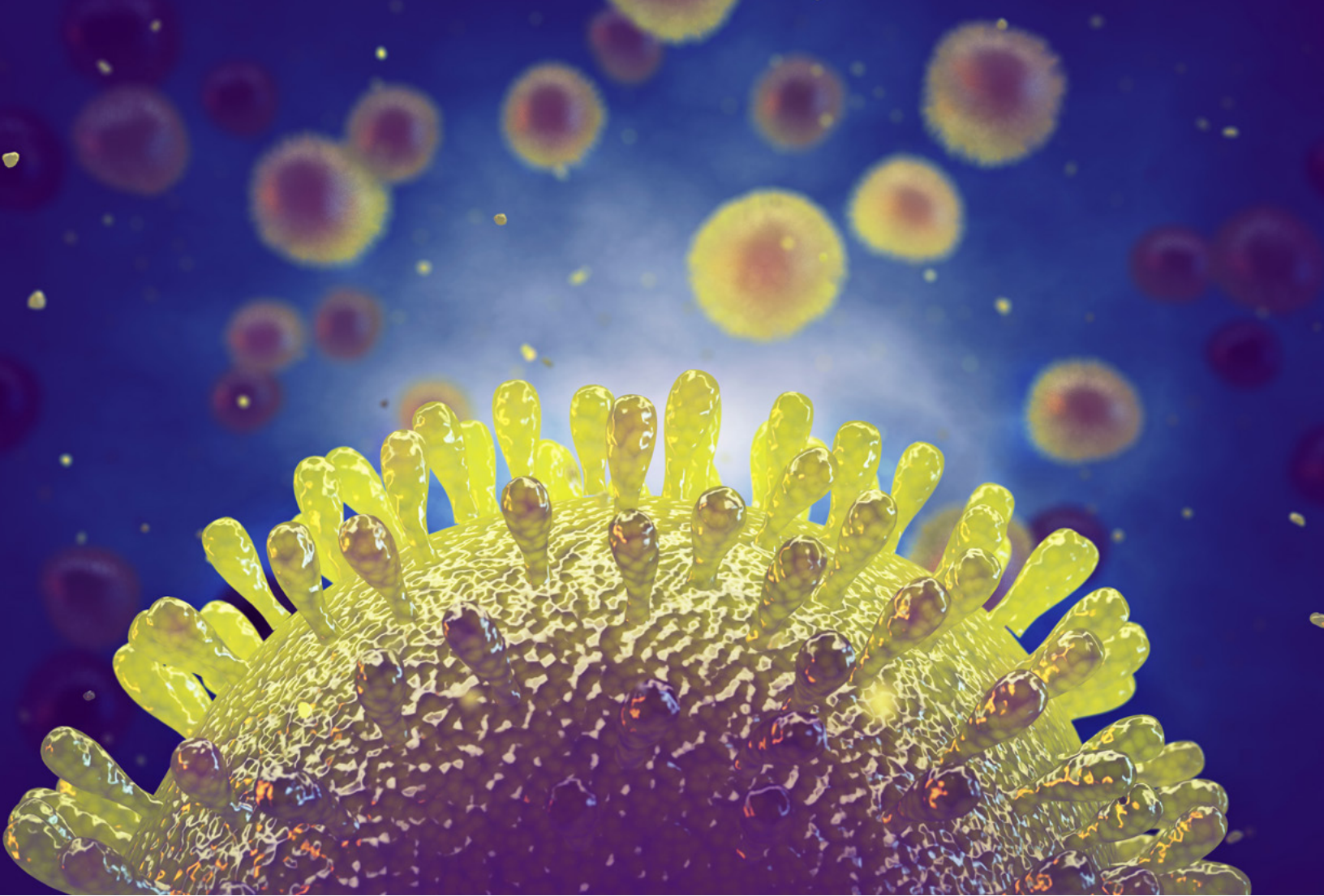


Prepare for Respiratory Illness Season

With the added risk from the pandemic, this year's respiratory illness season is expected to be unlike any other. Stock up on the essential assays, instruments, and supplies needed for diagnosing influenza A and B, COVID-19, and other respiratory illnesses. Plus find PPE to help you create a safe workplace.

Table of Contents

| | |
|--------------------------------------|-----------|
| Flu Diagnostics | 3 |
| Testing Essentials for COVID-19 | 15 |
| Specimen Collection Products | 22 |
| Workplace Safety | 36 |
| How to Choose Respiratory Protection | 42 |



Flu Diagnostics

Find the high-performance equipment and assays you need to rapidly and accurately detect influenza A and B.

Abbott™ ID Now™ System (formerly Alere i)

The Abbott ID NOW System uses isothermal nucleic acid amplification technology to detect influenza A and B viral nucleic acids. The CLIA-waived method includes all of the necessary testing components, and the analyzer offers barcode technology and LIS connectivity. This multi-assay platform includes Influenza A and B, RSV, and Strep A.

Cat. No. 23-046-617 and 23-046-634



| Clinical Outcomes | Operational Outcomes | Financial Outcomes |
|---|--|--|
| Sensitive — true molecular test eliminates need for negative confirmation | Simple — easy-to-use, CLIA-waived test | Effective — fast, accurate results reduce downstream costs |
| Precise — accurate results help to avoid unnecessary antibiotic use | Fast — results available within 13 minutes | Flexible — multiple purchase options |

Quidel™ Solana™ Molecular Platform

The Quidel Solana Molecular Platform provides Influenza A and B results in 45 minutes and multiplexes up to 12 tests per run. The CLIA-moderate assay includes access to the Power of Virena and offers LIS/EMR connectivity. This multi-assay platform offers a variety of diagnostics, from bacterial infections to infectious diseases.

Cat. No. 23-043-111 and 23-043-107



| Clinical Outcomes | Operational Outcomes | Financial Outcomes |
|--|---|---|
| Precise — highly sensitive molecular-based test for accurate results | Flexible — offers STAT or batch testing | Efficient — high sensitivity reduces the need for repeat testing |
| Safe — helps to reduce the risk of unnecessary antibiotic use | Simple — share results via LIS connectivity | Affordable — multiple placement and purchase options; no need for multiple instrument platforms |

Roche cobas™ Liat™ System

In just three steps, the Roche cobas Liat assays and analyzer automate the entire nucleic acid test (NAT) process: reagent preparation, target enrichment, inhibitor removal, nucleic acid extraction, amplification, real-time detection, and result interpretation. The system is CLIA-waived for Influenza A/B, RSV, and Strep A.

Cat. No. 23-312-198 and 23-312-200



| Clinical Outcomes | Operational Outcomes | Financial Outcomes |
|--|--|---|
| Confidence in making the right treatment decision at the time of the test — no confirmation needed | Fast, easy operation with three simple steps | No confirmation required |
| | Walkaway workflow and test results in 20 minutes or less | Molecular CPT codes generally allow for higher reimbursement rate |
| Lab-standard sensitivity and specificity | Closed System concept, ideal for moving molecular out of the lab with decreased risk for contamination | Capital and Placement options available |

Sekisui™ Silaris™

Influenza A&B Test

The Sekisui Silaris Influenza A&B Test is a molecular diagnostic test that uses the polymerase chain reaction (PCR) and lateral flow technology to qualitatively detect the presence of antibodies to influenza A and B viruses in approximately 30 minutes. The CLIA-waived test is performed on nasal swab specimens using the Silaris Dock device. Reagents can be stored at room temperature.



Cat. No. 22-321-116 and 22-321-115

| Clinical Outcomes | Operational Outcomes | Financial Outcomes |
|--|--|---|
| Accurate — clear information helps physicians provide targeted treatment | Easy — CLIA-waived test for point-of-care diagnosis and treatment | Simple — test reduces costs and need to send samples to a core or reference lab |
| Reliable — precise results help reduce inappropriate use of antibiotics | Efficient — fast turnaround allows for prompt infection control measures | Affordable — cost effective with minimal capital outlay |

Abbott™ DIGIVAL™ Reader

The Abbott DIGIVAL Reader is a benchtop instrument that can objectively interpret results by using a camera to detect the presence of influenza types A and B and identify a completed lateral flow assay, analyze the intensity of the test and control line, and display the results (positive, negative, or invalid) on the color touchscreen.

Cat. No. 23-046-680 and 23-046-682



| Clinical Outcomes | Operational Outcomes | Financial Outcomes |
|---|---|--|
| Accurate — objective results for more reliable diagnoses | Simple — intuitive design for ease of use | Affordable — cost-effective assay and platform |
| Effective — eliminates the variability of visually read tests | Flexible — choice of “read now” and “walk away” modes | |

BD™ Veritor™ Plus System

The BD Veritor Plus System is a rapid chromatographic immunoassay analyzer for the qualitative detection of Influenza A and B viral nucleoprotein antigens. The system is CLIA-waived for nasal and nasopharyngeal swabs and offers two modes: Analyze Now and Walk Away. This multi-assay platform includes Influenza A and B, RSV, and Strep A.

Cat. No. B256066, B256041, and B256045



| Clinical Outcomes | Operational Outcomes | Financial Outcomes |
|---|---|--|
| Accurate — high positive and negative percent agreement | Easy — no need to incubate samples before testing | Economical — expanded storage holds up to 3,500 results, so you spend less on additional analyzers |
| Fast — get results in 10 minutes for prompt diagnosis | Flexible — works with multiple sample types and workflow options | |
| | Safe — print or download results to reduce the risk of reporting errors | |

Quidel™ Sofia™ 2 Analyzer

The Quidel Sofia 2 Analyzer accurately detects influenza A and B from nasal swabs, nasopharyngeal swabs, and nasal aspirate/wash samples. Its CLIA-waived procedure can produce dual test results from a single sample. The instrument features an easy-to-use interface with customizable settings.

Cat. No. 23-043-086 and 23-043-070



| Clinical Outcomes | Operational Outcomes | Financial Outcomes |
|---|---|--|
| Clear — eliminates the subjectivity of visually interpreted results | Convenient — offers “read now” and “walk away” options | Flexible — multiple placement or direct purchase options |
| Fast — positive results in as little as three minutes | Adaptable — multi-assay platform is approved for influenza A and B, RSV, Strep A, Lyme, and hCG | Economical — prompt, type-specific results to help reduce unnecessary testing and overuse of antibiotics |
| Efficient — make real-time treatment decisions for public health surveillance | | |

Sekisui Diagnostics™ Acucy™

Influenza A&B Test Kit

Accurate, simple, and affordable, the Sekisui Diagnostics Acucy Influenza A&B test offers a best-in-class flu A performance and provides an easy-to-use CLIA-waived procedure as well as definitive and standardized results. The included QC (2 additional tests for QC in each kit) removes the additional expense of performing external QC testing making this analyzer even more cost competitive.

Cat. No. 22-321-25 and 22-321-28



| Clinical Outcomes | Operational Outcomes | Financial Outcomes |
|--|-----------------------------------|----------------------------------|
| Best-in-class flu A sensitivity | Results within 15 minutes | No long-term contract |
| Definitive results reduce human error and repeat testing | Read-Now mode for high throughput | QC included = major cost savings |

Sure-Vue™ Signature Influenza A&B Test

Rapidly detect influenza type A and B antigens from nasal and nasopharyngeal swab specimens with the Sure-Vue Signature Influenza A & B Test, a rapid CLIA-waived immunochromatographic test that is accurate, efficient, and cost effective.

Cat. No. 23-200-279



| Clinical Outcomes | Operational Outcomes | Financial Outcomes |
|--|--|--------------------------------------|
| Accurate results reduce unnecessary antibiotic use | Requires minimal hands-on time | Competitive prices |
| Early diagnosis can lead to fewer secondary infections | Results in as little as 10 minutes | |
| | Simple procedure with the flexibility to process few or many tests depending on demand | Assays include all components needed |

Sekisui OSOM™ Ultra Plus Influenza A&B Test

The Sekisui OSOM Ultra Plus Influenza A & B Test is a rapid CLIA-waived immunochromatographic test for the qualitative detection of influenza type A and type B antigens from nasal and nasopharyngeal swab specimens from symptomatic patients.

Cat. No. 22-321-130



| Clinical Outcomes | Operational Outcomes | Financial Outcomes |
|--|--|--------------------------------------|
| Accurate results reduce unnecessary antibiotic use | Requires minimal hands-on time | Competitive prices |
| Early diagnosis can lead to fewer secondary infections | Results in as little as 10 minutes | |
| | Simple procedure with the flexibility to process few or many tests depending on demand | Assays include all components needed |

Quidel™ QuickVue™ Influenza A&B Test

The Quidel QuickVue Influenza A+B Test detects and differentiates influenza A and B antigens directly from nasal swab and nasopharyngeal swab specimens. A single sample can be used to run both the QuickVue Influenza A+B Test and the QuickVue RSV10 Test.

Cat. No. 23-043-058



| Clinical Outcomes | Operational Outcomes | Financial Outcomes |
|---|--|---|
| Accurate — reliable results allow clinicians to take action with confidence | Simple — CLIA-waived testing doesn't require additional training | Economical — accurate, cost-effective detection |
| Fast — reduce wait time and improve patient satisfaction | Flexible — works with multiple sample types | |
| | Easy — test with only 30 to 60 seconds of hands-on time | |

Thermo Scientific™ Xpect™ Flu A&B Test

The Thermo Scientific Xpect Flu A & B Test detects influenza A and B antigens from human nasal wash, nasal swab, and throat swab specimens. It helps maintain efficiency and productivity with a simple two-step procedure that offers accurate results in as little as 15 minutes.

Cat. No. R24600



| Clinical Outcomes | Operational Outcomes | Financial Outcomes |
|---|--|---|
| Accurate — reliable results allow clinicians to take action with confidence | Flexible — multiple specimen storage, collection, and transportation options | Economical — accurate, cost-effective detection |
| | Efficient — less than one minute of hands-on time and a walk-away procedure | |

Meridian Bioscience™ ImmunoCard STAT!™

Influenza A&B Test

The Meridian Bioscience ImmunoCard STAT! FLU A&B Test is a CLIA-waived lateral flow immunoassay for the detection of Influenza A and B from nasal and nasopharyngeal swabs. It can also be used to test nasal aspirate and wash specimens.

Cat. No. 23-315-126



| Clinical Outcomes | Operational Outcomes | Financial Outcomes |
|---|--|---|
| Accurate — reliable results allow clinicians to take action with confidence | Simple — CLIA-waived testing doesn't require additional training | Economical — accurate, cost-effective detection |
| | Fast — results in 10 to 15 minutes | |

Sekisui™ OSOM™ Ultra

The Sekisui OSOM Ultra Influenza *in vitro* rapid qualitative test detects Influenza A and B nucleoprotein antigens directly from nasal swab, nasopharyngeal swab, and nasopharyngeal aspirate/wash specimens obtained from patients with signs and symptoms of respiratory infection.

Cat. No. 22-321-105



| Clinical Outcomes | Operational Outcomes | Financial Outcomes |
|---|--|---|
| Accurate — high positive and negative percent agreement | Simple — four easy steps for results in 15 minutes | Economical — no capital costs |
| Fast — short turnaround time for prompt diagnosis | Flexible — works with multiple sample types | Affordable — priced competitively with other rapid diagnostic tests |

Germaine Laboratories™ BioSign™

Flu A&B Test

The Germaine Laboratories BioSign Flu A&B Test can detect the presence of influenza A and B antigens from a single specimen. The method is CLIA-waived when used with nasal or nasopharyngeal swabs and CLIA-moderate for nasal wash/aspirate specimens. This rapid test can produce results in 10 to 15 minutes.



Cat. No. 23-111-369

| Clinical Outcomes | Operational Outcomes | Financial Outcomes |
|---|---|---|
| Accurate — reliable results allow clinicians to take action with confidence | Simple — CLIA-waived tests produce results in 15 minutes | Economical — no capital costs |
| Fast — reduce wait time and improve patient satisfaction | Flexible — format and procedure allow testing in a variety of clinical settings | Affordable — priced competitively with other rapid diagnostic tests |

| FLU MATRIX | Abbott ID Now (formerly Alere i) | Quidel Solana | Roche cobas Liat System | Sekisui Silaris |
|---|---|--|--|--|
| Catalog Number | 23-046-634 | 23-043-107 | 23-312-198 23-312-199 23-312-200 | 22-321-116 |
| Specimen Type | <ul style="list-style-type: none"> Nasal swab Nasopharyngeal swab | <ul style="list-style-type: none"> Nasal swab Nasopharyngeal swab | <ul style="list-style-type: none"> Nasopharyngeal | <ul style="list-style-type: none"> Nasal swab |
| CLIA Status | Waived | Moderate | Waived | Waived |
| Test Methodology | Nucleic acid amplification | Helicase-dependent amplification (HDA) | Real-time PCR | Reverse transcription-polymerase chain reaction (RT-PCR) |
| Instrument Connectivity | Yes — uni- and bidirectional | Yes, with real-time mapping and tracking capabilities | Yes (with RALS, Telcor, or cobas 1000) | No |
| Time to Result | <ul style="list-style-type: none"> 5 minutes (positive) 13 minutes (confirm negative) | <ul style="list-style-type: none"> 45 minutes (per run of 1–12 tests) | <ul style="list-style-type: none"> 20 minutes | <ul style="list-style-type: none"> 30 minutes |
| Recommend Negative Confirmation | No | No | No | No — uses reference method |
| Comparison Method | Molecular | Culture, PCR | Culture and PCR for discrepant | FDA-approved molecular (Abbott ID Now) |
| Sensitivity: A/B (May depend on sample type) | 96.3%/100% (direct) 92.8%/100% (VTM) | 98.6%/100% (culture) 97.2%/100% (PCR) | A=100%/B=100% | 97%/94% |
| Specificity: A/B (May depend on sample type) | 97.4%/97.1% (direct) 98.5%/97.7% (VTM) | 95.1%/99.3% (culture) 96.7%/98.9% (PCR) | A = 96.8%/B=94.1% | 94%/99% |
| Tests Per Kit | 24 | 48 | 20 | 25 |
| CPT Codes*** | 87502 | 87493 (<i>C. diff</i>) 87529 x 2/87798 (HSV 1&2/VZV) 87651/87998 (GAS/Strep Complete) 87661 (<i>Trichomonas</i>) 87502 (Flu A and B) 187798 x 2 (<i>Bordetella</i> Complete) 87077/87653 (Group B Strep: Vaginal/Rectal Swab) 87798 x 2 (RSV and hMPV) | 87502 (Flu A and B) | 87502QW (Influenza DNA Amp Probe) |
| Meets FDA Flu Reclassification Requirements | Yes | Yes | Yes | Yes |
| Other Tests Available | <ul style="list-style-type: none"> RSV Strep A COVID-19 | <ul style="list-style-type: none"> <i>C. difficile</i> HSV 1&2/VZV Strep A, Strep Complete (A,C,G) RSV/hMPV <i>Trichomonas</i> Group B Strep <i>Bordetella pertussis</i> | None currently | None currently |

Flu: Analyzers

| FLU MATRIX | Abbott DIGIVAL | BD Veritor Plus System | Quidel Sofia and Sofia 2 | Sekisui Acucy |
|--|---|---|---|---|
| Catalog Number | 23-046-682 | B256045 (Waived) B256041 (Moderate) | 23-043-070 | 22-321-128 |
| Specimen Type | <ul style="list-style-type: none"> Nasal swab Nasopharyngeal swab | <ul style="list-style-type: none"> Nasal swab Nasopharyngeal swab | <ul style="list-style-type: none"> Nasal swab Nasopharyngeal swab Nasopharyngeal wash/aspirate | <ul style="list-style-type: none"> Nasal Swab Nasopharyngeal Swab |
| CLIA Status | Waived | Waived and moderate | Waived and moderate | Waived |
| Test Methodology | Lateral flow | Digital immunoassay (DIA) | Fluorescent immunoassay | Lateral flow |
| Instrument Connectivity | Yes — bidirectional | Veritor: No Veritor Plus: Yes | Yes, with real-time mapping and tracking capabilities | USB drive and third party |
| Time to Result | 15 minutes | 10 minutes | <ul style="list-style-type: none"> 3 minutes (positive, Sofia 2) 15 minutes (negative, Sofia and Sofia 2) | 15 minutes |
| Recommend Negative Confirmation | Yes | Yes | Yes | Yes |
| Comparison Method | PCR | PCR | Culture | Composite comparator (culture and molecular) |
| Sensitivity: A/B (May depend on sample type) | 87%/95.7% | 81–83%/80–86% | 90–99%/88–90% | A: 96.4% B: 82.3% |
| Specificity: A/B (May depend on sample type) | 95.1%/99.5% | 97–98%/99–100% | 95–96%/96–97% | A: 96.0% B: 98.1% |
| Tests Per Kit | 22 | 30 | 25 | 25 |
| CPT Codes*** | 87804 x 2 | 87804 (Flu A and B) 87807 (RSV) 87880 (Strep A) | 87804QW (Flu A and B) 87807QW (RSV) 87880 (Strep A) 87880QW (Strep A+) 84703 (hCG) 86618QW 86618QW 86618QW (Sofia 2 Lyme IgM) 86618QW-59 (Sofia 2 Lyme IgG) | 87804QW |
| Meets FDA Flu Reclassification Requirements | Yes | Yes | Yes | Yes |
| Other Tests Available | None currently | <ul style="list-style-type: none"> RSV Strep A | <ul style="list-style-type: none"> hCG (Sofia) RSV (Sofia, Sofia 2) Strep A (Sofia, Sofia 2) Lyme (Sofia, Sofia 2) COVID-19 SARS Ag (Sofia, Sofia 2) | None currently |

Flu: Visual Read Lateral Flow Tests

| FLU MATRIX | Sure-Vue Signature Flu Test | Sekisui OSOM Ultra Plus Flu Test | Quidel QuickVue Influenza A&B Test | Thermo Scientific Xpect | Meridian Bioscience Immunocard STAT! |
|--|---|---|---|---|--|
| Catalog Number | 23-200-279 | 22-321-130 | 23-043-058 | R24600 | R24600 |
| Specimen Type | <ul style="list-style-type: none"> Nasal Swab Nasopharyngeal Swab | <ul style="list-style-type: none"> Nasal Swab Nasopharyngeal Swab | <ul style="list-style-type: none"> Nasal Swab Nasopharyngeal Swab | <ul style="list-style-type: none"> Nasal Swab Nasal Wash Throat Swab | <ul style="list-style-type: none"> Nasal Swab Nasopharyngeal Swab Nasal Aspirate/Wash |
| CLIA Status | Waived | Waived | Waived | Moderate | Waived (nasal and nasopharyngeal swabs); Moderate (wash/aspirate) |
| Test Methodology | Lateral flow | Lateral flow | Lateral Flow | Lateral Flow | Lateral Flow |
| Instrument Connectivity | No | No | No | N/A | No |
| Time to Result | 10 minutes | 10 minutes | 10 minutes or sooner | 15 minutes | 15 minutes or sooner |
| Recommend Negative Confirmation | Yes | Yes | Yes | Yes | Yes |
| Comparison Method | Composite comparator (culture and molecular) | Composite comparator (culture and molecular) | PCR | Culture and PCR for discrepant | Culture and PCR |
| Sensitivity: A/B (May depend on sample type) | 90.3%/88% (PCR) | 90.3%/88% (PCR) | 81.9%/80.9% | A+92.2% / B=97.8% | 95.3% 91.6% (culture) 89.2%/86.4% (PCR) |
| Specificity: A/B (May depend on sample type) | 96.7%/99.2% (PCR) | 96.7%/99.2% (PCR) | 97.8%/99.1% | 100% | 85.7%/97.5% (culture) 99.4%/99% (PCR) |
| Tests Per Kit | 25 | 25 (plus two for QC) | 25 | 20 | 32 |
| CPT Codes*** | 87804QW | 87804QW | 87502 (Flu A and B) | 87502 (Flu A and B) | FLU A (swab) - 87804QW, FLU B (swab) - 87804QW-59, FLU A (wash/aspirate) - 87804, FLU B (wash/aspirate) - 87804-59 |
| Meets FDA Flu Reclassification Requirements | Yes | Yes | Yes | Yes | Yes |
| Other Tests Available | N/A | N/A | None | None | None |

Flu: Visual Read Lateral Flow Tests

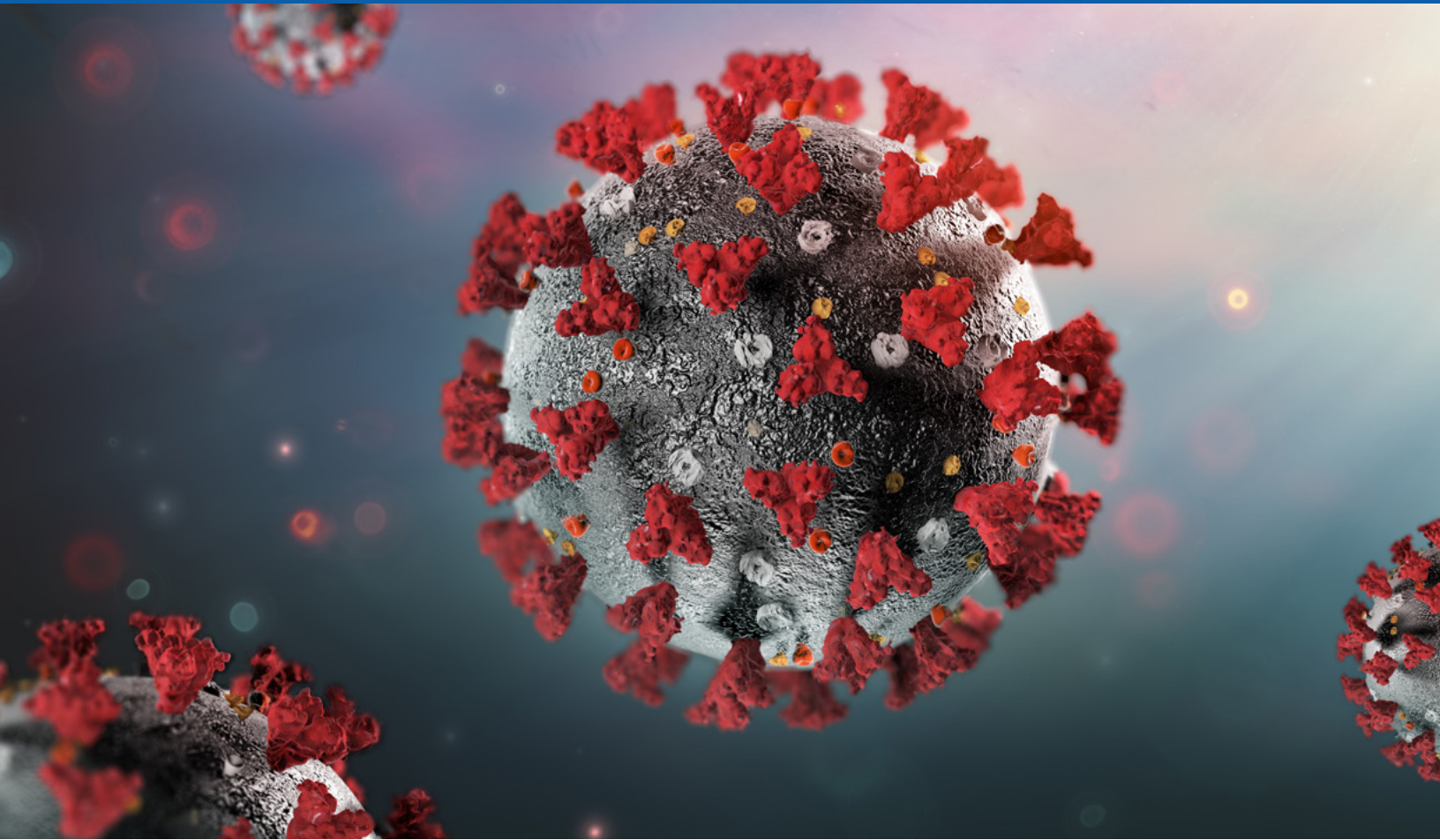
| FLU MATRIX | Sekisui OSOM Ultra Test | Germaine Labs BioSign Influenza A&B Test |
|--|---|---|
| Catalog Number | 22-321-105 | 23-111-369 |
| Specimen Type | <ul style="list-style-type: none"> Nasal swab Nasopharyngeal swab Nasopharyngeal wash/aspirate | <ul style="list-style-type: none"> Nasal swab Nasopharyngeal swab Nasopharyngeal wash/aspirate |
| CLIA Status | Waived (nasal and nasopharyngeal swabs) Moderate (wash/aspirate) | Waived (nasal and nasopharyngeal swabs) Moderate (wash/aspirate) |
| Test Methodology | Lateral flow | Lateral flow |
| Instrument Connectivity | No | No |
| Time to Result | <ul style="list-style-type: none"> 10 minutes (positive) 15 minutes (confirm negative) | <ul style="list-style-type: none"> 10 minutes (positive) 15 minutes (confirm negative) |
| Recommend Negative Confirmation | Yes | Yes |
| Comparison Method | Culture, PCR | RT-PCR |
| Sensitivity: A/B (May depend on sample type) | 91.2%/82.4% (culture) 89.2%/86.4% (PCR) | 96.7% (both A and B) |
| Specificity: A/B (May depend on sample type) | 75.2%/88.3% (culture) 99.4%/99% (PCR) | 91% (both A and B) |
| Tests Per Kit | 25 (plus two for QC) | 25 |
| CPT Codes*** | 87804QW/87804QW-59 | Influenza A 87084QW Influenza B 87084QW-59 |
| Meets FDA Flu Reclassification Requirements | Yes | Yes |
| Other Tests Available | N/A | N/A |

*Approved VTM: BD/Copan VTM, Remel M4, Remel M4RT, Remel M5, Remel M6, or Copen ESwab

**Modifier, -QW, used to reflect CLIA-waived status for test

***The information being provided is for informational purposes only. There are no warranties, promises, or representations of any kind, expressed or implied, as to the nature, standard, or accuracy of the information being provided. This information does not purport to provide legal or certified coding advice. Policies regarding appropriate coding and payment levels can vary greatly from payer to payer and change over time, therefore it is the individual provider's responsibility to determine appropriate coding, charges, and claims for a particular service as required under federal and state law. It is strongly recommended that providers contact their contracted payers to determine appropriate coding and charge or payment levels prior to submitting claims.

As of November 11, 2019, these products meet FDA reclassification requirements. Policies regarding reclassification can vary and change over time, therefore it is the individual provider's responsibility to preform due diligence and make an individual determination regarding a product's classification.



Testing Essentials for COVID-19

Browse a wide selection of industry-leading COVID-19 testing products available through the Fisher Healthcare channel. Choose from molecular methods, antigen detection, or serological tests in CLIA-waived, moderate, or high-complexity assays.

The information in this section was accurate as of the September 29, 2020 publishing date.

Abbott™ ID NOW™ COVID-19

Please contact your Fisher Healthcare account manager to order this product.

This rapid, high-quality molecular test targets the COVID-19 RdRp Gene and produces positive results in as little as five minutes.

CPT Code: 87635

For use on the ID NOW platform under U.S. Food and Drug Administration (FDA) Emergency Use Authorization



| Product Name | Quantity | Mfr. No. |
|-----------------------------|--------------------------------------|----------|
| ID NOW COVID-19 Test | 24 Tests | 190-000 |
| ID NOW COVID-19 Control Kit | 12 Positive and 12 Negative Controls | 190-080 |

Applied Biosystems™ TaqPath™ COVID-19 Combo Kit

An end-to-end, real-time PCR multiplex diagnostic solution for COVID-19. Fast and highly sensitive, it contains the assays and controls needed for the detection of RNA from the SARS-CoV-2 virus.

For use under FDA Emergency Use Authorization



| Product Name | Description | Quantity | Mfr. No. |
|---|--|---|----------------|
| TaqPath RT-PCR COVID-19 Kit | COVID-19 Real Time PCR Assay Multiplex (Gene Orf-1ab, N Protein, S Protein, MS2) | 1,000 Reactions | A47814 |
| | MS2 Phage Control | | |
| TaqPath COVID-19 Control Kit | TaqPath COVID-19 Control (2 tubes) TaqPath COVID-19 Control Dilution Buffer (2 tubes) | | |
| Applied Biosystems™ MagMAX™ Viral/Pathogen Nucleic Acid Isolation Kit | | Up to 2,000 Preparations, when 200 µL of Sample Is Used | A42352 |
| MagMAX Viral/Pathogen Nucleic Acid Isolation Kit | | Up to 2,000 Preparations, when 200 µL of Sample Is Used | A48310 |
| MagMAX Viral/Pathogen II Nucleic Acid Isolation Kit | | Up to 2,000 Preparations, when 200 µL of Sample Is Used | A48383 |
| TaqPath 1-Step Multiplex Master Mix (No ROX) | | 5 mL | A28521, A28522 |
| TaqPath 1-Step Multiplex Master Mix (No ROX) | | 10 mL | A28523 |

BD Veritor™ System for Rapid Detection of SARS-CoV-2

Detect nucleocapsid protein from SARS-CoV-2 in 15 minutes in near-patient settings. The test can be run on-demand or automated, and includes collection swabs in the kit.

For use with BD Veritor Plus Analyzer under FDA Emergency Use Authorization.



| Product Name | Quantity | Mfr. No. | Cat. No. |
|---|----------|----------|----------|
| BD Veritor System for Rapid Detection of SARS-CoV-2 | 30 Tests | 256082 | B256082 |

Quidel™ Sofia™ SARS Antigen Fluorescent Immunoassay (FIA)

Please contact your Fisher Healthcare account manager to order this product.

Uses immunofluorescence-based lateral flow technology to detect nucleocapsid protein from SARS-CoV-2. Produces automated and objective results in 15 minutes and allows testing in near-patient environments.

For use with Sofia and Sofia 2 under FDA Emergency Use Authorization



| Product Name | Quantity | Mfr. No. | Cat. No. |
|------------------------------|----------|----------|------------|
| Sofia SARS Antigen FIA Assay | 25 Tests | 20374 | 23-043-151 |

Abbott SARS-CoV-2 IgG Assay

A chemiluminescent microparticle immunoassay (CMIA) intended to qualitatively detect IgG antibodies to SARS-CoV-2 in human serum or plasma.

For use under FDA Emergency Use Authorization



| Product Name | For System | Quantity | Mfr. No. | Cat. No. |
|-------------------------------|---------------------------|------------------------------------|----------|-----------|
| SARS-CoV-2 IgG Reagent Kit | Abbott™ ARCHITECT™ System | 100 Tests | 06R86-20 | NC1805663 |
| | | 500 Tests | 06R86-30 | NC1808272 |
| SARS-CoV-2 IgG Calibrator Kit | Abbott ARCHITECT | 1 Vial/Level | 06R86-01 | NC1805666 |
| SARS-CoV-2 IgG Control Kit | Abbott ARCHITECT | 1 Vial Each, Positive and Negative | 06R86-10 | NC1805670 |
| SARS-CoV-2 IgG Reagent Kit | Abbott™ Alinity™ i | 200 (2 x 100) Tests | 06R90-20 | NC1810345 |
| | | 1,000 (2 x 500) Tests | 06R90-30 | NC1810346 |
| SARS-CoV-2 IgG Calibrator Kit | Abbott Alinity i | 1 Vial/ Level | 06R90-01 | NC1810347 |
| SARS-CoV-2 IgG Control Kit | Abbott Alinity i | 1 Vial Each Positive and Negative | 06R90-10 | NC1810348 |

Ortho™ Clinical Diagnostics Antibody Tests

Highly accurate tests for the detection of COVID-19 antibodies now available on high-throughput, random access, fully automated Ortho™ VITROS™ Systems.

For use under FDA Emergency Use Authorization



Ortho VITROS Anti-SARS-CoV-2 IgG

| Product Name | Mfr. No. | Cat. No. |
|---|----------|------------|
| VITROS Anti-SARS-CoV-2 IgG Reagent Pack | 619 9919 | 23-610-519 |
| VITROS Anti-SARS-CoV-2 IgG Calibrator | 619 9920 | 23-610-520 |
| VITROS Anti-SARS-CoV-2 IgG Controls | 619 9921 | 23-610-521 |

Ortho VITROS Anti-SARS-CoV-2 Total Antibody Test

| Product Name | Mfr. No. | Cat. No. |
|---|----------|------------|
| VITROS Anti-SARS-CoV-2 Total Reagent Pack | 619 9922 | 23-610-519 |
| VITROS Anti-SARS-CoV-2 Total Calibrator | 619 9923 | 23-610-520 |
| VITROS Anti-SARS-CoV-2 Total Controls | 619 9924 | 23-610-521 |

Microbiologics™ Helix Elite™ Kit

Includes newly launched COVID-19 controls to help validate and monitor molecular tests. Contains non-infectious synthetic RNA to use as a positive control in molecular COVID-19 testing or full process control for assay development.



| Product Name | Mfr. No. | Cat. No. |
|---|----------|------------|
| Helix Elite COVID-19 Synthetic RNA Kit | HE0060S | 23-004-149 |
| Helix Elite SARS-CoV-2 Synthetic RNA Pool (N/E/RdRp/S Gene Targets) | HE0061S | 23-047-374 |
| Helix Elite SARS-CoV-2 Process Control (Pellet) | R9000 | 23-047-375 |
| Helix Elite SARS-CoV-2 Process Control (Swab) | R9001 | 23-047-376 |

SeraCare™ AccuPlex™ SARS-CoV-2 Verification Panel

Use for assay verification at installation and to document test performance within the assay range. Helps you establish lower limits of detection, perform assay comparisons, and evaluate staff proficiency.

| Product Name | Sequence Coverage | Concentration | Quantity | Mfr. No. |
|--|----------------------|--|--|-----------|
| AccuPlex SARS-CoV-2 Verification Panel | ORF1a, RdRp, E, N | 100,000 Copies/mL | Positive: 1: 1 x 3 mL | 0505-0129 |
| | ORF1a, RdRp, E, N, S | 10,000 Copies/mL 1,000 Copies/mL 5,000 Copies/mL (RNase P) | Positive: 2: 1 x 3 mL Positive: 3: 1 x 3 mL Negative: 1 x 3 mL | 0505-0132 |
| AccuPlex SARS-CoV-2 Reference Material Kit | ORF1a, RdRp, E, N | 5,000 Copies/mL | Positive: 5 x 1.5 mL | 0505-0126 |
| | ORF1a, RdRp, E, N, S | 5,000 Copies/mL (RNase P) | Negative: 5 x 1.5 mL | 0505-0133 |

SeraCare™ ACCURUN™ Anti-SARS-CoV-2 Reference Material Kits

Offer a complete quality solution for SARS-CoV-2 antibody testing, including positive and negative materials. Support assay installation and day-to-day performance monitoring.



| Product Name | Antibody Coverage | Release Testing | Quantity | Mfr. No. |
|--|-------------------|-----------------------|--|-----------|
| ACCURUN Anti-SARS-CoV-2 Series 1000 Reference Material Kit | IgG | Abbott ARCHITECT | Positive: 2 x 3 mL Negative: 2 x 3 mL | 2015-0222 |
| ACCURUN Anti-SARS-CoV-2 Series 2000 Reference Material Kit | Total | Roche cobas™ Analyzer | Positive: 2 x 3 mL Negative: 2 x 3 mL | 2015-0225 |

Not for in vitro diagnostic use. For research use only.

Thermo Scientific™ AcroMetrix™ COVID-19 RNA Controls

For research use only (RUO)

A multiplex synthetic, dual concentration RNA transcript control to validate and monitor the performance of molecular tests for detecting COVID-19 using Bio-Rad™ Droplet Digital™ PCR (ddPCR™) technology.



| Control Name | Copies/μL | Quantity | Mfr. No. | Cat. No. |
|--|-----------|------------|----------|-------------|
| AcroMetrix COVID-19 Low Positive Control | 500 | 1 x 20 μL | 954519 | 10-095-4519 |
| AcroMetrix COVID-19 Ultra-Low Positive Control (RNA) | 100 | 1 x 20 μL | | |
| AcroMetrix COVID-19 Full Process Control | N/A | 5 x 1.5 mL | 954517 | 10-095-4517 |

ZeptoMetrix™ NATtrol™ SARS-CoV-2 External Run Controls

Reliable and easy-to-use non-infectious positive and negative controls for SARS-CoV-2 test development, validation, and ongoing quality control.



| Product Name | Description | Quantity | Mfr. No. | Cat. No. |
|---|---|------------|-------------------|------------|
| NATtrol SARS-CoV-2 External Run Control | Non-Infectious, Intact Viral Particles for Quality Control | 6 x 0.5 mL | NATSARS(COV2)-ERC | 22-158-370 |
| NATtrol SARS-CoV-2 Negative Control | | 6 x 0.5 mL | NATSARS(COV2)-NEG | 22-158-372 |
| NATtrol SARS-CoV-2 Stock | Non-Infectious, Intact Viral Particles | 1.0 mL | NATSARS(COV2)-ST | 22-158-371 |
| SARS-CoV-2 Viral Culture Fluid, Isolate: USA-WA1/2020 | Heat-Inactivated | 0.5 mL | 0810587CFHI-0.5mL | 22-158-364 |
| | | 1.0 mL | 0810587CFHI | 22-158-369 |
| NATtrol SARS-CoV-2 (Recombinant) Stock | Inactivated Intact Bacterial Cells with Synthetic SARS-COV-2 Sequence; for Evaluating Nucleic Acid Tests for the SARS-COV-2 N Gene | 1 x 1.0 mL | 831042 | 22-158-340 |
| NATtrol SARS-CoV-2 (E/ORF1ab Recombinant) Stock | Inactivated Intact Bacterial Cells with Synthetic SARS-COV-2 Sequence; for Evaluating Nucleic Acid Tests for the SARS-COV-2 N Gene or ORF1ab Gene Regions | 1 x 1.0 mL | 831043 | 22-158-342 |

COVID-19: Method Comparison

| Product Name | Target | Method | CLIA Status | Sample Type | Required Instrument | Mfr. No. | Cat. No. |
|--|----------|-----------------|-------------|---|--|--------------------|--|
| Applied Biosystems TaqPath COVID-19 Combo Kit | Virus | Molecular | High | Nasopharyngeal, Oropharyngeal, Nasal, or Mid- Turbinate Swabs; Nasopharyngeal Aspirate; Bronchoalveolar Lavage | 7500 Fast Dx or Applied Biosystems™ QuantStudio™ PCR System | A47814 | A47814 |
| Abbott ID NOW™ COVID-19 | Virus | Rapid Molecular | Moderate* | Nasal, Throat, or Nasopharyngeal Swab | ID NOW Benchtop Analyzer | 190-000 | Contact your Abbott or Fisher Healthcare rep for more information |
| BD Veritor™ System for Rapid Detection of SARS-CoV-2 | Virus | Rapid Antigen | Moderate** | Included Nasal Swab | Veritor Plus Benchtop Instrument | 256082 | B256082 |
| Quidel Sofia SARS Antigen FIA | Virus | Rapid Antigen | Moderate** | Nasal or Nasopharyngeal Swab | Sofia or Sofia 2 Benchtop Instruments | 20374 | Contact your Quidel or Fisher Healthcare rep for more information |
| Abbott Diagnostics Architect SARS- CoV-2 IgG | Antibody | Serology | Moderate | Serum, SST, or Plasma | Architect | 06R8620 06R8630 | NC1805663 NC1808272 |
| Abbott Diagnostics Alinity I SARS-CoV-2 IgG | Antibody | Serology | Moderate | Serum, SST, or Plasma | Alinity | 06R9020 06R9030 | NC1810345 NC1810346 |
| Ortho Clinical Diagnostics VITROS Anti-SARS-CoV-2 IgG Test | Antibody | Serology | Moderate | Serum | XT7600, 5600, 3600, or ECiQ | 6199919 | 23-610-519 |
| Ortho Clinical Diagnostics VITROS Anti-SARS-CoV-2 Total Reagent | Antibody | Serology | Moderate | Serum or Plasma (K2 EDTA) | XT7600, 5600, 3600, or ECiQ | 199922 | 23-610-516 |

*Designed for near-patient testing in a variety of environments.

**Testing is authorized to be performed at moderate-complexity/high-complexity laboratories or at the point of care (POC) in patient care settings operating under a CLIA Certificate of Waiver.

Distributed by the Fisher Healthcare channel. Contact us today.



Specimen Collection

Find multiple product options to help you optimize the collection, transport, and storage of your valuable specimens.

Specimen Collection: Saline

BD BBL™ Prepared Saline Solution, 0.85%, Tubes

| Product Name | Description | Quantity | Cat. No. | Mfr. No. |
|---|---------------------|----------|----------------|----------|
| BD BBL Prepared Saline Solution, 0.85%, Tubes | 100 x 1 mL, Glass | 100/Pack | L97815 | 297815 |
| | 100 x 3 mL, Plastic | 100/Pack | B215439 | 215439 |
| | 100 x 5 mL, Glass | 100/Pack | L21819 | 221819 |

Specimen Collection: Swabs

Thermo Scientific™ Polyester Tipped Swabs

| Product Name | Description | Quantity | Cat. No. | Mfr. No. |
|--|--|------------|---------------|----------|
| Thermo Scientific Polyester Tipped Swabs | 6" Polyester Oropharyngeal, Polystyrene 150 mm Swab with 15 mm Polyester Tip | 1,000/Pack | R12548 | R12548 |

BD™ Sterile Flocked Nylon Swabs



| Product Name | Description | Quantity | Cat. No. | Mfr. No. |
|--------------------------------|--------------------|----------|-------------------|----------|
| BD Sterile Flocked Nylon Swabs | Regular Tip | 100/Pack | 22-349-820 | 220250 |
| | Inflexible Minitip | 100/Pack | 22-349-821 | 220251 |
| | Flexible Minitip | 100/Pack | 22-349-822 | 220252 |

BD™ Plain Dry Swabs in Peel Pouches



| Product Name | Description | Quantity | Cat. No. | Mfr. No. |
|------------------------------------|---------------|------------|-------------------|----------|
| BD Plain Dry Swabs in Peel Pouches | Polyester Tip | 1,000/Case | 22-349-823 | 164KS01 |
| | Rayon Tip | 1,000/Case | 22-349-826 | 167KS01 |

BD™ Sterile Dry Polyester Swabs with Plastic Applicators in Peel Pouches



| Product Name | Description | Quantity | Cat. No. | Mfr. No. |
|---|-------------------|------------|-------------------|----------|
| BD Sterile Dry Polyester Swabs with Plastic Applicators in Peel Pouches | 100 mm Breakpoint | 1,000/Case | 22-349-824 | 1U054S01 |

Puritan™ Sterile Polyester-Tipped Applicators



| Product Name | Description | Quantity | Cat. No. | Mfr. No. |
|--|-------------------------|----------|-------------------|------------|
| Puritan Sterile Polyester-Tipped Applicators | Regular Tip | 100/Pack | 14-960-1J | 25-806 1PD |
| | Regular Tip, 2/Envelope | 200/Pack | 22-029-574 | 25-806 2PD |

Puritan™ Sterile Polyester-Tipped Applicators in Dry Transport Tubes



| Product Name | Description | Quantity | Cat. No. | Mfr. No. |
|---|-------------------------|----------|-------------------|---------------|
| Puritan Sterile Polyester-Tipped Applicators in Dry Transport Tubes | Regular Tip | 500/Case | 22-029-626 | 25-806 1PD BT |
| | Regular Tip, 2/Envelope | 50/Pack | 22-029-631 | 25-806 2PD BT |

Puritan™ Sterile Standard Polyester Swab with Resealable Dry Transport Tubes

| Product Name | Description | Quantity | Cat. No. | Mfr. No. |
|---|-------------------------|----------|-------------------|---------------|
| Puritan Sterile Standard Polyester Swab with Resealable Dry Transport Tubes | Regular Tip, 2/Envelope | 30/Pack | 22-029-644 | 25-806 2PR TT |

Puritan™ PurFlock™ Ultra Sterile Flocked Swabs in Dry Transport

| Product Name | Description | Quantity | Cat. No. | Mfr. No. |
|---|--|----------|-------------------|--------------|
| Puritan PurFlock Ultra Sterile Flocked Swabs in Dry Transport Tubes | Ultrafine Tip, 100 mm Breakpoint | 500/Case | 22-029-611 | 25-3317-U BT |
| | Regular Tip, 80 mm Breakpoint | 500/Case | 22-029-612 | 25-3306-U BT |
| | Mini tip | 500/Case | 22-029-614 | 25-3316-U BT |
| | Micro Ultrafine Tip, 100 mm Breakpoint | 500/Case | 22-029-616 | 25-3318-U BT |
| | Large Tip, 80 mm Breakpoint | 500/Case | 22-029-618 | 25-3406-U BT |
| | DNA-Controlled Production, Elongated Tip, 30 mm Breakpoint | 500/Case | 22-029-620 | 25-3606-U BT |
| | Elongated Tip, 100 mm Breakpoint | 500/Case | 22-029-622 | 25-3706-U BT |
| | Elongated Tip | 500/Case | 22-029-624 | 25-3806-U BT |

Puritan™ HydraFlock™ Sterile Flocked Swabs in Dry Transport Tubes

| Product Name | Description | Quantity | Cat. No. | Mfr. No. |
|---|--|----------|-------------------|--------------|
| Puritan HydraFlock Sterile Flocked Swabs in Dry Transport Tubes | Mini Tip | 500/Case | 22-029-610 | 25-3316-H BT |
| | Regular Tip, 80 mm Breakpoint | 500/Case | 22-029-613 | 25-3306-H BT |
| | Ultrafine Tip, 100 mm Breakpoint | 500/Case | 22-029-615 | 25-3317-H BT |
| | Micro Ultrafine Tip, 100 mm Breakpoint | 500/Case | 22-029-617 | 25-3318-H BT |
| | Large Tip, 80 mm Breakpoint | 500/Case | 22-029-619 | 25-3406-H BT |
| | Elongated Tip, 30 mm Breakpoint | 500/Case | 22-029-621 | 25-3606-H BT |

Puritan™ Rayon-Tipped Applicators



| Product Name | Description | Quantity | Cat. No. | Mfr. No. |
|----------------------------------|-----------------------------------|----------|-------------------|-------------|
| Puritan Rayon-Tipped Applicators | Mini Tip, Flexible Plastic Handle | 100/Pack | 22-029-570 | 25-806 1PR |
| | Regular Tip, Aluminum Handle | 50/Pack | 22-029-572 | 25-801 R 50 |

Puritan™ PurFlock™ Ultra Sterile Flocked Swabs



| Product Name | Description | Quantity | Cat. No. | Mfr. No. |
|--|--|----------|-------------------|-----------|
| Puritan PurFlock Ultra Sterile Flocked Swabs | Mini Tip | 500/Case | 22-025-193 | 25-3316-U |
| | Ultrafine Tip | 500/Case | 22-025-194 | 25-3317-U |
| | Micro Ultrafine Tip | 500/Case | 22-025-195 | 25-3318-U |
| | Elongated Tip, 30 mm Breakpoint | 500/Case | 22-029-506 | 25-3606-U |
| | Elongated Tip, 80 mm Breakpoint | 500/Case | 22-029-508 | 25-3506-U |
| | Elongated Tip, 80 or 100 mm Breakpoint | 500/Case | 22-029-510 | 25-3706-U |
| | Elongated Tip | 500/Case | 22-029-512 | 25-3806-U |



Puritan™ HydraFlock™ Sterile Flocked Swabs

| Product Name | Description | Quantity | Cat. No. | Mfr. No. |
|--|----------------------------------|----------|-------------------|-----------|
| Puritan HydraFlock Sterile Flocked Swabs | Elongated Tip, 20 mm Breakpoint | 50/Pack | 22-029-660 | 25-3206-H |
| | Elongated Tip, 30 mm Breakpoint | 500/Case | 22-029-507 | 25-3606-H |
| | Elongated Tip, 80 mm Breakpoint | 500/Case | 22-029-509 | 25-3506-H |
| | Elongated Tip, 100 mm Breakpoint | 500/Case | 22-029-511 | 25-3706-H |
| | Elongated Tip | 500/Case | 22-029-513 | 25-3806-H |

Puritan™ PurFlock™ Ultra Sterile Swabs in Dry Transport Tubes

| Product Name | Description | Quantity | Cat. No. | Mfr. No. |
|---|---------------------|----------|-------------------|---------------|
| Puritan PurFlock Ultra Sterile Swabs in Dry Transport Tubes | Regular Tip, 2/Tube | 50/Pack | 22-029-634 | 25-3306-2U BT |

Puritan™ HydraFlock™ Sterile Flocked Swabs in Dry Transport Tubes

| Product Name | Description | Quantity | Cat. No. | Mfr. No. |
|---|---------------------------------------|----------|-------------------|---------------|
| Puritan HydraFlock Sterile Flocked Swabs in Dry Transport Tubes | Regular Tip, 80 mm Breakpoint, 2/Tube | 50/Pack | 22-029-635 | 25-3306-2H BT |

Puritan™ FAB-SWAB Sterile PurFlock™ Ultra Swabs in Dry Transport Tubes



| Product Name | Description | Quantity | Cat. No. | Mfr. No. |
|--|--|----------|-------------------|---------------------|
| Puritan FAB-SWAB Sterile PurFlock Ultra Swabs in Dry Transport Tubes | DNA-Controlled Production, Elongated Tip | 500/Case | 14-959-130 | 25-3606-U BT FABUSA |

Puritan™ Cotton-Tipped Applicators in Dry Transport Tubes



| Product Name | Description | Quantity | Cat. No. | Mfr. No. |
|--|---------------------------|----------|-------------------|---------------|
| Puritan Cotton-Tipped Applicators in Dry Transport Tubes | Wood Handles, Regular Tip | 500/Case | 22-029-628 | 25-806 1WC BT |

Puritan™ HydraFlock™ Sterile Flocked Swabs



| Product Name | Description | Quantity | Cat. No. | Mfr. No. |
|--|---------------------|----------|-------------------|-----------|
| Puritan HydraFlock Sterile Flocked Swabs | Mini Tip | 500/Case | 22-025-198 | 25-3316-H |
| | Ultrafine Tip | 500/Case | 22-025-199 | 25-3317-H |
| | Micro Ultrafine Tip | 500/Case | 22-025-200 | 25-3318-H |

Puritan™ Sterile Foam Swab with Tapered Acetal Handle



| Product Name | Description | Quantity | Cat. No. | Mfr. No. |
|--|-------------|----------|-------------------|----------------|
| Puritan Sterile Foam Swab with Tapered Acetal Handle | Thin Tip | 500/Case | 22-029-640 | 25-1406 1PF 50 |

Puritan™ 6" Sterile Standard Foam Swab w/ PS Handle



| Product Name | Description | Quantity | Cat. No. | Mfr. No. |
|--|-------------|------------|-------------------|-----------------|
| Puritan 6" Sterile Standard Foam Swab w/ PS Handle | Foam Tip | 1,000/Case | 22-029-688 | 25-1506 1PF 100 |

Puritan™ Foam Tipped Swabs in Dry Transport Tubes



| Product Name | Description | Quantity | Cat. No. | Mfr. No. |
|--|-------------|----------|-------------------|----------------|
| Puritan Foam Tipped Swabs in Dry Transport Tubes | 2/Tube | 500/Case | 22-029-630 | 25-1506 1PF BT |
| | | 50/Pack | 22-029-633 | 25-1506 2PF BT |

Foamtec™ CleanWIPE™ Sterile Foam Nasopharyngeal Swabs

| Product Name | Description | Quantity | Cat. No. | Mfr. No. |
|---|-----------------|------------|-------------------|-----------|
| Foamtec CleanWIPE Sterile Foam Nasopharyngeal Swabs | With Breakpoint | 1,000/Case | 19-304-884 | MP1301AST |

Foamtec™ CleanWIPE™ Sterile Foam Oropharyngeal Swabs

| Product Name | Description | Quantity | Cat. No. | Mfr. No. |
|--|-----------------|------------|-------------------|----------|
| Foamtec CleanWIPE Sterile Foam Oropharyngeal Swabs | With Breakpoint | 1,000/Case | 19-304-885 | MP1302ST |

Starplex™ Scientific Multitrans™ Collectors with Flocked Swabs in Peel Pouches



| Product Name | Description | Quantity | Cat. No. | Mfr. No. |
|--|-------------------------------|----------|-------------------|-----------|
| Starplex Scientific Multitrans Collectors with Flocked Swabs in Peel Pouches | Regular Tip | 100/Case | 23-038-095 | S160FL |
| | Nasopharyngeal Swab, Fine Tip | 100/Case | 23-038-096 | S160-NASO |

Starplex™ Scientific Sterile Dry Polyester Swabs in Peel Pouches

| Product Name | Description | Quantity | Cat. No. | Mfr. No. |
|---|-------------|----------|------------------|----------|
| Starplex Scientific Sterile Dry Polyester Swabs in Peel Pouches | Male Tip | 100/Pack | 14-905-79 | S08 |

Starplex™ Scientific Dry Rayon Swab in Tubes

| Product Name | Description | Quantity | Cat. No. | Mfr. No. |
|---|-------------|----------|-------------------|----------|
| Starplex Scientific Dry Rayon Swab in Tubes | Single Swab | 500/Case | 22-046-550 | S09 |
| | Double Swab | 500/Case | 14-905-50 | S09D |

Copan Diagnostics Sterile Flocked Dry Nylon Swabs in Peel Pouches



| Product Name | Description | Quantity | Cat. No. | Mfr. No. |
|---|------------------------------------|----------|-------------------|----------|
| Copan Diagnostics Sterile Flocked Dry Nylon Swabs in Peel Pouches | Mini Tip, 80 mm Breakpoint | 100/Pack | 23-600-950 | 501CS01 |
| | Regular Tip, 80 mm Breakpoint | 100/Pack | 23-600-951 | 502CS01 |
| | Flexible Mini Tip (Nasopharyngeal) | 100/Pack | 23-600-952 | 503CS01 |
| | Ultra Mini Tip (Pediatric) | 100/Pack | 23-600-955 | 516CS01 |
| | Mini Tip | 100/Pack | 23-600-956 | 518CS01 |
| | Regular Tip | 100/Pack | 23-600-957 | 519CS01 |

Copan Diagnostics Sterile Dry Polyester Swab in Peel Pouches



| Product Name | Description | Quantity | Cat. No. | Mfr. No. |
|--|--------------------------------|------------|-------------------|----------|
| Copan Diagnostics Sterile Dry Polyester Swab in Peel Pouches | Regular Tip, 100 mm Breakpoint | 1,000/Case | 23-600-983 | 1U054S01 |

Copan Diagnostics Flocked Nylon Dry Swabs in Tubes

| Product Name | Description | Quantity | Cat. No. | Mfr. No. |
|--|--------------------------------|----------|-------------------|----------|
| Copan Diagnostics Flocked Nylon Dry Swabs in Tubes | Mini Tip | 100/Pack | 23-600-959 | 551C |
| | Regular Tip | 100/Pack | 23-600-960 | 552C |
| | Flexible Mini Tip | 100/Pack | 23-600-961 | 553C |
| | Ultra Mini Tip (Pediatric) | 100/Pack | 23-600-962 | 516C |
| | Mini Tip, 100 mm Breakpoint | 100/Pack | 23-600-963 | 518C |
| | Regular Tip, 100 mm Breakpoint | 100/Pack | 23-600-964 | 519C |

Copan Diagnostics Flocked Nylon Dry Swabs in Peel Pouches



| Product Name | Description | Quantity | Cat. No. | Mfr. No. |
|---|---|----------|-------------------|-----------|
| Copan Diagnostics Flocked Nylon Dry Swabs in Peel Pouches | Contoured Adult Tip, 80 mm Breakpoint | 100/Pack | 23-600-966 | 56380CS01 |
| | Contoured Pediatric Tip, 50 mm Breakpoint | 100/Pack | 23-600-967 | 56750CS01 |
| | Contoured Pediatric Tip, 80 mm Breakpoint | 100/Pack | 23-600-968 | 56780CS01 |

Copan Diagnostics Plain Dry Sterile Polyester Swabs in Peel Pouches

| Product Name | Description | Quantity | Cat. No. | Mfr. No. |
|---|-------------|----------|------------------|----------|
| Copan Diagnostics Plain Dry Sterile Polyester Swabs in Peel Pouches | Regular Tip | 100/Pack | 14-906-41 | 164KS01 |

Hardy Diagnostics™ Sterile Flocked Nylon Nasopharyngeal Swabs

| Product Name | Description | Quantity | Cat. No. | Mfr. No. |
|--|-------------------------------------|----------|-------------------|----------|
| Hardy Diagnostics Sterile Flocked Nylon Nasopharyngeal Swabs | Flexible Mini Tip, 80 mm Breakpoint | 100/Pack | 23-001-731 | 972012 |

Fisherbrand™ Synthetic-Tipped Applicators

| Product Name | Description | Quantity | Cat. No. | Mfr. No. |
|--|----------------------------|----------|-------------------|----------|
| Fisherbrand Synthetic-Tipped Applicators | Plastic Handle, 1/Envelope | 100/Pack | 22-363-170 | 22363170 |
| | Plastic Handle, 2/Envelope | 200/Pack | 22-363-164 | 22363164 |

Fisherbrand™ Dry Transport Swabs in Peel Pouches

| Product Name | Description | Quantity | Cat. No. | Mfr. No. |
|---|-------------|----------|------------------|-----------|
| Fisherbrand Dry Transport Swabs in Peel Pouches | Single Swab | 100/Pack | 14-907-10 | 14-907-10 |
| | Double Swab | 100/Pack | 14-907-11 | 14-907-11 |

Good Care Sterile Nasopharyngeal Flocked Swab

| Product Name | Description | Quantity | Cat. No. | Mfr. No. |
|---|------------------|------------|-------------------|-----------|
| Good Care Sterile Nasopharyngeal Flocked Swab | 80 mm Breakpoint | 1,000/Case | 22-363-174 | GW-1237NP |



Thermo Scientific™ MicroTest™ Tubes

| Product Name | Description | Quantity | Cat. No. | Mfr. No. |
|-----------------------------------|---|----------|-------------------|----------|
| Thermo Scientific MicroTest Tubes | Large Conical 3 mL Tube with Red Cap, No Swab | 72/Pack | 23-499-805 | R12505 |
| | Short 3 mL Conical Skirted Tube with Purple Cap, No Swab | 72/Pack | R12587 | R12587 |
| | Large 3 mL Conical Tube with Blue Cap, No Swab, without Beads | 72/Pack | R12591 | R12591 |

BD Universal Viral Transport Collection Kits

| Product Name | Description | Quantity | Cat. No. | Mfr. No. |
|--|---------------------------------|----------|----------------|----------|
| BD Universal Viral Transport Collection Kits | 1 mL, Flexible Flocked Mini Tip | 50/Pack | B220526 | 220526 |
| | 3 mL, Flocked Mini Tip | 50/Pack | B220529 | 220529 |
| | 3 mL, Flexible Flocked Mini Tip | 50/Pack | B220531 | 220531 |

BD ESwab™ Collection Kits



| Product Name | Description | Quantity | Cat. No. | Mfr. No. |
|--------------------------|---------------------------|----------|-------------------|----------|
| BD ESwab Collection Kits | Flexible Flocked Mini Tip | 50/Pack | B220532 | 220532 |
| | Regular Flocked Tip | 50/Pack | 22-349-700 | 220245 |
| | Flocked Mini Tip | 50/Pack | 22-349-701 | 220246 |

Puritan™ UniTranz-RT Transport Systems with PurFlock™ Swabs and Universal Transport Medium



| Product Name | Description | Quantity | Cat. No. | Mfr. No. |
|--|--------------------------|----------|-------------------|----------|
| Puritan UniTranz-RT Transport Systems with PurFlock Swabs and Universal Transport Medium | 3 mL, Mini Tip | 300/Case | 22-027-104 | UT-316 |
| | 3 mL, Ultrafine Mini Tip | 300/Case | 22-027-105 | UT-317 |

Starplex™ Scientific Multitrans™ Collectors with Flocked Swabs



| Product Name | Description | Quantity | Cat. No. | Mfr. No. |
|--|--------------------|----------|-------------------|-------------|
| Starplex Scientific Multitrans Collectors with Flocked Swabs | Regular Tip | 100/Case | 22-046-450 | S160-FL-COM |
| | Nasopharyngeal Tip | 100/Case | 22-146-450 | S160-NASO-1 |

Starplex™ Scientific Multitrans™ Collection and Transportation Systems



| Product Name | Description | Quantity | Cat. No. | Mfr. No. |
|--|-------------------------------|----------|--------------------|----------|
| Starplex Scientific Multitrans Collection and Transportation Systems | Dacron Tip, Media in PP Tubes | 50/Pack | 22-046-417A | S160-100 |

Copan Diagnostics ESwab™ Sample Collection and Delivery System



| Product Name | Description | Quantity | Cat. No. | Mfr. No. |
|---|---------------------------|----------|-------------------|----------|
| Copan Diagnostics ESwab Sample Collection and Delivery System | Regular Flocked Tip | 50/Pack | 23-600-900 | 480C |
| | Flocked Mini Tip | 50/Pack | 23-600-901 | 481C |
| | Flexible Flocked Mini Tip | 50/Pack | 23-600-902 | 482C |

Copan Diagnostics ESwab™ Sample Collection and Delivery System with 1 mL Amies Media



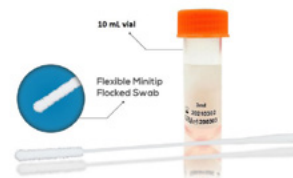
| Product Name | Description | Quantity | Cat. No. | Mfr. No. |
|---|---|----------|------------|----------|
| Copan Diagnostics ESwab Sample Collection and Delivery System with 1 mL Amies Media | Regular Flocked Nylon Tip, 80 mm Breakpoint | 50/Pack | 23-600-905 | 480CFA |

Copan Diagnostics ESwab™ Sample Collection and Delivery System



| Product Name | Description | Quantity | Cat. No. | Mfr. No. |
|---|---|----------|------------|----------|
| Copan Diagnostics ESwab Sample Collection and Delivery System | Regular Flocked Nylon Tip Plus a Rayon Swab | 50/Pack | 23-600-906 | 486C |

LabAid Universal Viral Collection Kit



| Product Name | Description | Quantity | Cat. No. | Mfr. No. |
|---------------------------------------|---------------------------------|------------|------------|----------|
| LabAid Universal Viral Collection Kit | 3 mL, Flexible Flocked Mini Tip | 1,000/Case | 22-363-009 | BVTK-010 |

BD Universal Viral Transport Vials



| Product Name | Description | Quantity | Cat. No. | Mfr. No. |
|------------------------------------|-------------|----------|------------|----------|
| BD Universal Viral Transport Vials | 3 mL | 50/Pack | 22-031-14 | 220220 |
| | 1 mL | 50/Pack | 22-349-981 | 220244 |

Starplex™ Scientific Multitrans™ Collectors

| Product Name | Description | Quantity | Cat. No. | Mfr. No. |
|---|------------------------------------|----------|------------|----------|
| Starplex Scientific Multitrans Collectors | No swabs, Sterile, in Peel Pouches | 100/Case | 22-046-420 | S160-0 |

Copan Diagnostics Universal Transport Medium (UTM-RT™) in Screw-Cap Tube



| Product Name | Description | Quantity | Cat. No. | Mfr. No. |
|---|---------------------------|----------|------------|----------|
| Copan Diagnostics Universal Transport Medium (UTM-RT) in Screw-Cap Tube | 3 mL in 16 x 100 mm tubes | 300/Case | 23-600-982 | 3C047N |

Hardy Diagnostics™ Viral Transport Medium



| Product Name | Description | Quantity | Cat. No. | Mfr. No. |
|--|-------------|----------|------------|----------|
| Hardy Diagnostics Viral Transport Medium | 3 mL | 20/Pack | 23-001-726 | R99 |

PrimeStore™ MTM Molecular Transport Media



| Product Name | Description | Quantity | Cat. No. | Mfr. No. |
|--|-------------------|----------|------------|----------|
| PrimeStore MTM Molecular Transport Media | 2 mL in Cryotubes | 50/Pack | 23-100-400 | LH-1-02 |
| | 3 mL in Cryotubes | 50/Pack | 23-100-401 | LH-1-03 |
| | 5 mL in Cryotubes | 50/Pack | 23-100-402 | LH-1-05 |

Bartels™ FlexTrans™ Transport Medium



| Product Name | Description | Quantity | Cat. No. | Mfr. No. |
|------------------------------------|---|----------|----------|-----------|
| Bartels FlexTrans Transport Medium | 2 mL in 15 mL Conical Tube with Glass Beads | 50/Pack | 22140360 | B1029-90D |



Workplace Safety

Whether you've remained open through the pandemic or you're now preparing to reopen, it's important to keep everyone in your facility safe. Make sure you have all the equipment and supplies you need to comply with best practices for:

- Personal protection
- Hand sanitation
- Temperature checks
- Social distancing
- Disinfecting shared areas
- Contact tracing

Personal Protective Equipment

Limit virus contact and transfer with fundamental supplies, including basic face and hand protection.

General-Purpose Facemasks

| | | |
|--|------------|--------------------|
| Fisherbrand™ Disposable Protective Face Masks, Three-Ply, with Ear Loops, Blue | 2,000/Case | 12-888-001 |
| Hanes™ Reusable Face Masks, Cotton, Three-Ply | 500/Case | 18-400-100 |
| Youth Disposable 3-ply Face Mask | 500/Case | 12-888-001Y |
| Medicom™ DisTech™ Earloop Face Mask, Pleated, Nonsterile | 2,000/Case | 12-888-30 |

Gloves

For product selection and availability, contact your Fisher Healthcare sales representative.

Protective Equipment Safety Signs

| | | |
|--|------|-------------------|
| Brady™ Sign: "Caution: Face Mask Required," Yellow and Black, 7 x 10 in. | Each | 19-036-248 |
| Brady Sign: "Caution: Gloves Required," Yellow and Black, 7 x 10 in. | Each | 19-102-439 |

Biohazardous Waste Disposal

| | | |
|---|----------|-------------------|
| Justrite™ Biohazard Waste Can, Metal, White, H x Dia.: 18 x 14 in. | Each | 19-033-755 |
| Justrite FM-Approved Biohazard Waste Container Replacement Bags, Orange, L x W: 33 x 24 in. | 100/Pack | 19-033-712 |



Social Distancing Aids

Provide the visual cues and barriers needed to maintain appropriate distancing in high-traffic, meeting, and other shared spaces.

Mobile Safety Partitions

| | | |
|---|------|--|
| Accuform™ Small Mobile Partition Shield Panel, Aluminum Frame with Clear Plastic Panel, H x W: 47 x 23 in. | Each | Contact your Fisher Healthcare representative. |
| Accuform Large Mobile Partition Shield Panel, Aluminum Frame with Clear Plastic Panel, H x W: 47 x 47 in. | Each | |
| Accuform Shared Desk Divider Mobile Partition Shield Panel, Aluminum Frame with Clear Plastic Panel, H x W: 36 x 48 in. | Each | |



Social Distancing Signs

| | | |
|---|------|-------------------|
| Brady Floor Sign: "Thank You for Practicing Social Distancing," Green and White, 14 x 18 in. | Each | 19-129-463 |
| Brady Sign: "Notice Social Distancing Maintain About 6 ft. (2m) Distance," Multicolor, 7 x 10 in. | Each | 19-129-457 |
| Brady Sign: "Thank You for Practicing Social Distancing," Red and White, 7 x 10 in. | Each | 19-129-451 |
| Brady Sign: "Prevent the Spread of Coronavirus (COVID-19)," Red and White, 7 x 10 in. | Each | 19-129-411 |



Traffic Safety Tapes

| | | |
|---|------|-------------------|
| Brady Floor Marking Tape: "Please Keep About 6 Feet (2m) Distance," Yellow and Black, 4 in. x 100 ft. | Each | 19-129-410 |
| Brady Vinyl Aisle Marking Arrows, Yellow, 3 in., 100/Roll | Each | 19-103-694 |
| Brady™ Bradylink™ Warning Chains, Yellow, 2 in. x 100 ft. | Each | 19-104-380 |



Traffic Safety Cones

| | | |
|---|------|-------------------|
| Brady™ Bradycone™ Warning Systems Cone, Orange, H: 35 in. | Each | 19-104-406 |
|---|------|-------------------|

Due to unprecedented global demand, some products may have limited availability and extended lead times.

Hand Sanitation

Encourage good personal hygiene with easily accessible hand sanitation stations.

Hand Sanitizer

For product selection and availability, contact your Fisher Healthcare sales representative.

| | | |
|--|---------|-------------|
| SUPPRESS™ Hand Sanitizer, 75% Alcohol, 16.9 oz. | 24/Case | 18-510-000 |
| AeroCleanse Hand Sanitizer with Flip Cap, 70% Ethyl Alcohol, 8 oz. | 32/Case | 17-215-003 |
| AeroCleanse Hand Sanitizer with Pump Top, 70% Ethyl Alcohol, 1 gal. | 4/Case | 17-215-004 |
| Lime Media 70% Ethanol Hand Sanitizing Gel, 1 gal. | Each | 19-043-981 |
| Medique Hand Sanitizer, 4 oz. | Each | NC1813304 |
| Medique Hand Sanitizer, 8 oz. | Each | NC1813305 |
| Dynamic Diagnostics Feel Welcome Hand Sanitizer, 80% Ethyl Alcohol, 16 oz. | 12/Case | 22-899-682 |
| Dynamic Diagnostics Hand Sanitizer Gel, 70% Ethyl Alcohol, 8 oz. | 24/Case | NC1849734 |
| Dynamic Diagnostics Hand Sanitizer Gel, 70% Ethyl Alcohol, 1 gal. | 4/Case | NC1828589 |
| Azer Scientific Hand Sanitizer Gel with Pump, 70% Ethanol, 8 oz. | 24/Case | 22-026-761 |
| Azer Scientific Hand Sanitizer Gel with Cap, 70% Ethanol, 8 oz. | 24/Case | 22-026-762 |
| Azer Scientific Hand Sanitizer Gel with Pump, 70% Ethanol, 1 gal. | 4/Case | 22-026-763 |
| Dynamic Diagnostics Feel Welcome Hand Sanitizer, 80% Ethyl Alcohol, 16 oz. | 12/Case | 22-899-682 |
| Ricca Chemical Hand Sanitizer, 75% Isopropyl Alcohol, 2.6 gal. | Each | R421900010F |
| Ricca Chemical Hand Sanitizer, 75% Isopropyl Alcohol, 5.3 gal. | Each | R421900020F |
| Cole-Parmer™ Liquid Hand Sanitizer, 80% Alcohol, 1 gal. | Each | 19-855-000 |
| AeroCleanse Hand Sanitizer with Pump Top, 80% Alcohol, 1 gal. | 4/Case | 17-215-006 |
| Thermo Scientific™ Hand Sanitizer, Isopropyl Alcohol (75%, v/v), 500 mL | 6/Case | HSANI500ML |
| Thermo Scientific™ Hand Sanitizer, Isopropyl Alcohol (75%, v/v), 4 L | Each | HSANI4LI |
| Medique Hand Sanitizer, 8 oz. | Each | NC1813610 |
| IW Tremont LabExact™ 70% IPA Cotton Cloth Wipes | 80/Pack | 17-654-100 |
| SUPPRESS™ Hand Sanitizing Wipes, 150 Count | 20/Case | 18-510-001 |
| SUPPRESS™ Hand Sanitizing Wipes, 75 Count | 20/Case | 18-510-002 |

Hand Sanitizer Dispensers

| | | |
|--|------|------------|
| Purell™ ES8 Touch-Free Hand Sanitizer Dispenser, White | Each | 19-043-809 |
| Purell™ MESSENGER™ ES8 Floor Stand with Dispenser, H: 52.6 in. | Each | 19-043-926 |

Hygiene Safety Signs

| | | |
|--|------|------------|
| Brady Sign: "Prevent the Spread of Coronavirus (COVID-19) Please Use Hand Sanitizer Before Entering," Blue and White, 7 x 10 in. | Each | 19-129-417 |
| Brady Sign: "Prevent the Spread of Coronavirus (COVID-19) Please Wash Hands for 20 Seconds," Blue and White, 7 x 10 in. | Each | 19-129-429 |



Disinfection of Shared Areas

Effectively sanitize shared areas with essential cleaning tools and supplies.

Disinfectant Cleaners

| | | |
|--|--------|-------------------|
| Purell Professional Surface Disinfectant, Citrus Scented | 32 oz. | 19-043-816 |
|--|--------|-------------------|

Disinfectant Wipes

| | | |
|---|----------|------------------|
| Current Technologies Standard HYPE-WIPE™ Bleach Towelettes, 12 x 12 in. | 100/Case | 14-412-56 |
| Current Technologies Mini HYPE-WIPE™ Bleach Towelettes, 3 x 3 in. | 100/Case | 14-412-59 |

Disinfectant Spray

| | | |
|---|---------|-------------------|
| Synthetic Labs One-Step Cleaner Disinfectant | 12/Case | 22-899-683 |
| Current Technologies Bleach-Rite™ Disinfecting Spray with Bleach, 64 oz. | 6/Case | 14-412-54 |
| Current Technologies Bleach-Rite™ Disinfecting Spray with Bleach, 128 oz. | 4/Case | 14-412-53 |

General-Purpose Floor Cleaning

| | | |
|--|---------|-------------------|
| Vileda Professional™ Sentrex™ Cut End Wet Mop | 12/Case | 19-200-620 |
| Essendant Rubbermaid™ Invader™ Wet Mop Handles | Each | 19-057-563 |
| Rubbermaid™ WaveBrake™ Sidepress Bucket with Wringer, Yellow Plastic, Capacity: 35 qt. | Each | 19-076-528 |
| Freudenberg™ C-Pro Cut End Cotton Mops, 16 oz. | 12/Case | 19-200-622 |

Squeegees

| | | |
|--|------|-------------------|
| Remco™ Vikan™ Foam Blade Squeegee Heads, White, 28 x 3.5 in. | Each | 17-227-918 |
| Remco Vikan Foam Blade Squeegee, Blue, Small, 10 x 3.1 in. | Each | 17-227-897 |

Industrial Gloves

For product selection and availability, contact your Fisher Healthcare sales representative.

Contamination Control

| | | |
|--|------|-------------------|
| NOTRAX™ Autoclavable Bubble Mat, 2 x 3 ft., Gray | Each | 19-086-052 |
|--|------|-------------------|

Due to unprecedented global demand, some products may have limited availability and extended lead times.



Temperature Checks

Use temperature checks to monitor potential health issues.

Digital Thermometers

| | | |
|----------------------------------|---------|------------------|
| Berrcom™ IR No-Touch Thermometer | Each | NC1799281 |
| | 40/Case | 296368192 |

Safety Awareness Signs

| | | |
|---|------|-------------------|
| Brady Sign: "Warning Quarantine Area Keep Out," Orange and Black, 10 x 7 in. | Each | 19-129-433 |
| Brady Sign: "Warning Coronavirus (COVID-19) Quarantine Area Keep Out," Orange and Black, 10 x 7 in. | Each | 19-129-439 |

Screening Tents

| | | |
|---|------|-------------------|
| Ergodyne™ SHAX™ 6000 Heavy-Duty Commercial Pop-Up Tent, Lime Green, H x L x W: 14 x 10 x 10 ft. | Each | 19-808-126 |
| Ergodyne SHAX 6051 Heavy-Duty Pop-Up Tent Kit, Blue, H x L x W: 14 x 10 x 10 ft. | Each | 19-819-701 |



Contact Tracing

Implement contact tracing as a critical component of containing virus spread.

Safety Device

| | | |
|---|------|--------------------|
| Blackline Safety™ G7c Cellular Wireless Connected Safety Device, for Lone Workers, with Fall and No Motion Detection; Includes Emergency, Low-Battery, and Worker Check-In Alarms | Each | 01-017-8557 |
|---|------|--------------------|



Due to unprecedented global demand, some products may have limited availability and extended lead times.

Return to work confidently with the supplies and PPE you need to keep your workplace safe and productive.

Contact your Fisher Healthcare sales representative to find additional products and learn more.

Explore more products and resources online: fishersci.com/pandemic-response | fishersci.com/research-essentials



How to Choose Respiratory Protection

Protecting What Matters Most

Keeping employees and customers safe is a top priority for all of us and protecting them from airborne particles and pathogens has never been more important. Use this guide to help choose respiratory protection for you and your colleagues. Find related definitions and distinctions between types of masks and respirators and PPE options based on the operational task.

Respiratory Protection: Face Masks

Cloth Masks

| | | |
|---|--|------------|
| Hanesbrands Inc. Triple Layer 100% Cotton Reusable Mask | Cloth masks are reusable (washable) and nonsterile. Commonly worn to reduce aerosols that can spread viruses in social situations, they are soft, breathable, and comfortable for everyday wear. Most have front panel pleats, soft elastic ear loops, and an adjustable nose piece for better fit. Cotton masks offer low levels of filtration efficiency and are not recommended for surgical use. They do not require fit testing and are not airtight. | 18-400-100 |
|---|--|------------|



Disposable Non-Woven Masks

| | | |
|---|--|---------------------|
| Protective Disposable Face Masks with Ear Loops | Disposable face masks are designed for single or limited use and are similar to surgical masks in filtration and fluid resistance. Universally sized, they are latex free with soft, elastic ear loops. Not intended for medical use, disposable face masks have 2- or 3-ply construction, do not require fit testing, and are not airtight. | Cat. No. 12-888-001 |
|---|--|---------------------|



Procedure and Surgical Masks

| | | |
|---|---|---------------------|
| Medicom™ SafeMask™ FreeFlow Earloop Mask, Level 3 | Surgical masks are tested to meet levels of barrier protection as specified in ASTM F2100-19.* Procedure masks are FDA-approved medical devices for use in healthcare procedures. They do not require fit testing and are not airtight. | Cat. No. 19-910-717 |
|---|---|---------------------|



N95 Respirators

| | | |
|--|---|----------------------|
| Moldex™ N95 Disposable Particulate Respirators | <p>An N95 mask or respirator filters at least 95% of airborne particles as defined by the U.S. National Institute for Occupational Safety and Health (NIOSH, 42 CFR Part 84). They are functionally equivalent to FFP2 respirators (European Union) and KN95 respirators (China), with slightly different certification criteria.</p> <p>In the United States, the Occupational Safety and Health Administration (OSHA) requires that healthcare workers use N95 respirators if they are working with patients suspected or confirmed to be infected with COVID-19, Ebola, Mycobacterium tuberculosis, pandemic or avian influenza, or severe acute respiratory syndrome (SARS).</p> <p>Fit testing is required by OSHA for N95 respirator wearers to both identify the right model, style, and size, and to verify fit thereafter. These respirators can make breathing more difficult, so the wearer must also be medically evaluated for heart conditions, lung disease, and claustrophobia.</p> | Cat. No. 18-999-1449 |
|--|---|----------------------|



Surgical N95 Respirators

| | | |
|---|---|----------------------|
| Moldex™ N95 Healthcare Particulate Respirators Surgical Masks | <p>Surgical respirators (also called Surgical N95, medical, or healthcare respirators) are N95 masks used specifically in healthcare; they meet both FDA and NIOSH requirements. In response to shortages during the COVID-19 pandemic, the Families First Coronavirus Response Act changed liability and certification requirements to allow the use of industrial N95 respirators.</p> <p>Fit testing is required by OSHA for N95 respirator wearers to both identify the right model, style, and size, and to verify fit thereafter. These respirators can make breathing more difficult, so the wearer must also be medically evaluated for heart conditions, lung disease, and claustrophobia.</p> | Cat. No. 19-150-0429 |
|---|---|----------------------|



*ASTM Levels

- Level 1: Low barrier protection; for low-risk, non-surgical procedures and exams that do not involve aerosols, sprays, or fluids
- Level 2: Moderate barrier protection; for low-to-moderate levels of aerosols, sprays, and fluids
- Level 3: Maximum barrier protection; for situations with potential for heavy aerosols, sprays, and fluid exposure

Respiratory Protection: Face Masks



Available Resources

<https://www.cdc.gov/coronavirus/2019-ncov/prevent-getting-sick/about-face-coverings.html>

https://www.cdc.gov/niosh/npptl/topics/respirators/disp_part/default.html

<https://www.cdc.gov/niosh/npptl/pdfs/UnderstandDifferenceInfographic-508.pdf>

https://www.osha.gov/pls/oshaweb/owadisp.show_document?p_id=12716&p_table=standards

Useful Links

<https://www.cdc.gov/niosh/npptl/hospresptoolkit/default.html>

<https://www.cdc.gov/coronavirus/2019-ncov/communication/print-resources.html>

Contact your Fisher Healthcare sales representative for more information.

Distributed by Fisher Healthcare. Contact us today:

In the United States

Order online: fisherhealthcare.com

Fax an order: 1-800-290-0290

Call customer service: 1-800-640-0640

© 2020 Thermo Fisher Scientific Inc. All rights reserved.

Trademarks used are owned as indicated at fishersci.com/trademarks.

20-462-1626 SR 08/20 BN20205305

 **fisher**
healthcare
part of **Thermo Fisher Scientific**