



Knowing now matters.™



Alere Determine™ HIV-1/2 Ag/Ab Combo

Enables detection of HIV earlier at the point-of-care.

The first and only FDA approved rapid point-of-care test that simultaneously and separately detects HIV-1/2 antibodies and free HIV-1 p24 antigen on a single test strip.

Breaking the HIV Infection Cycle

Identifying HIV infection early, during the most infectious stage offers significant benefits, particularly in high risk populations such as men who have sex with men and injecting drug users.

- Rapid detection also helps to get patients into effective care and treatment earlier.
- Individuals who are unaware of their infection are 3.5 times more likely to transmit the virus to someone else.¹
- By detecting HIV earlier, further transmission can be prevented during this highly infectious stage.

Next generation point-of-care HIV testing

Alere Determine™ HIV-1/2 Ag/Ab Combo is a 4th generation test that has the ability to detect HIV earlier than 2nd and 3rd generation antibody-only tests.² This enables health care providers to diagnose HIV infection earlier allowing individuals to seek medical care sooner.

- CLIA waived for fingerstick whole blood.
- Requires minimal training.
- Test in three easy steps.
- Receive results in just 20 minutes.
- Test using whole blood, serum, or plasma.
- Proved 99.9% overall clinical sensitivity for all sample types.

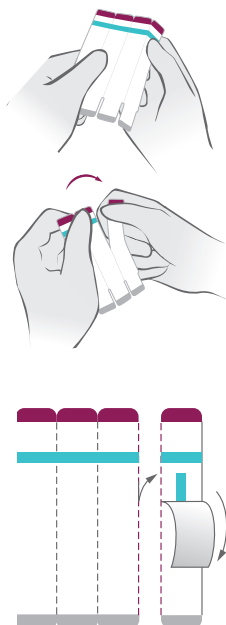


Now CLIA Waived
for Fingerstick
Whole Blood

Test in 3 Easy Steps

1 Prepare Test

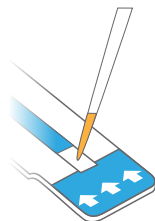
Bend along the perforation, then tear one strip from the right and remove cover.



2 Add Sample

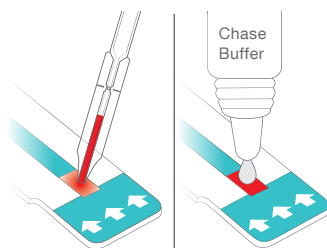
Serum or Plasma Sample

Apply 50 µL of sample by touching the tip of the precision pipette to the Sample Pad.



Fingerstick Whole Blood Sample

Add 50 µL sample of whole blood, wait 1 minute, then add Chase Buffer.

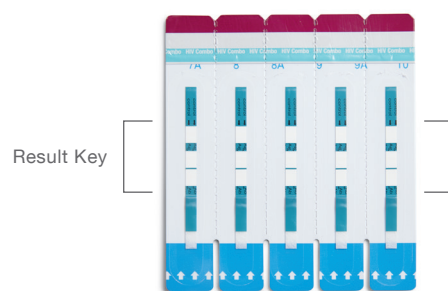


1 Min

3 Read Results

Read the results—for both the free HIV-1 p24 antigen (Ag) and HIV-1/2 antibodies (Ab)—in just 20 minutes.

Line	Reactive	Nonreactive	Invalid
Control			
Ag			
Ab			



Please refer to the package insert for complete instructions.

Product Information

Information Type	Product Detail
Method	Lateral Flow
Time to results	20 minutes
Storage conditions	2-30°C (36-86°F)
Test shelf life	12 months*
External controls shelf life	24 months**

Product Clinical Performance

Information Type	Overall Clinical Sensitivity	Overall Clinical Specificity
Fingerstick Whole Blood	99.9%	99.8%
Venous Whole Blood	99.9%	99.7%
Serum	99.9%	99.6%
Plasma	99.9%	99.7%

AlereHIV.com/US

1. Marks G, Crepaz N, Janssen RS. Estimating sexual transmission of HIV from persons aware and unaware that they are infected with the virus in the USA. AIDS. 2006 Jun 26;20:1447-50.
 2. Masciotra S, et al. Performance of the Alere Determine™ HIV-1/2 Ag/Ab Combo Rapid Test with specimens from HIV-1 seroconverters from the US and HIV-2 infected individuals from Ivory Coast. J Clin Virol 2013; Published online 05 August 2013. DOI: 10.1016/j.jcv.2013.07.002 [http://www.journalofclinicalvirology.com/article/S1386-6532\(13\)00277-1/abstract](http://www.journalofclinicalvirology.com/article/S1386-6532(13)00277-1/abstract)

*Average shelf life received by customer
 (product has a 15 month shelf life from date of manufacture)

**From date of manufacture

© 2015 Alere. All rights reserved. The Alere Logo, Alere, Determine and Knowing now matters are trademarks of the Alere group of companies. All Thermo Fisher Scientific Inc. trademarks used are owned as indicated at www.fishersci.com/trademarks. Photos are for illustrative purposes only. Any person depicted in the photo is a model. 120001837-01 04/15. Fisher #BN1120132

Fisher HealthCare Ordering Information

Product	Order Number
Alere Determine™ HIV-1/2 Ag/Ab Combo (25 Tests)	23046614
Alere Determine™ HIV-1/2 Ag/Ab Combo (100 Tests)	23046616
External Controls	23046615

In the United States:

For customer service, call 1-800-640-0640
 To fax an order, use 1-800-290-0290
 To order online: www.fisherhealthcare.com